

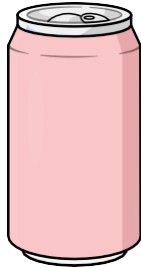


The Hilltop
thai restaurant & bar



SOFT DRINK

COKE	40.-
COKEL LIGHT	40.-
SPRITE	40.-
RED BULL	40.-
SODA	40.-
GINGER ALE	40.-
TONIC WATER	40.-
MINERAL WATER S/L	30.-/60.-



SMOOTHIE

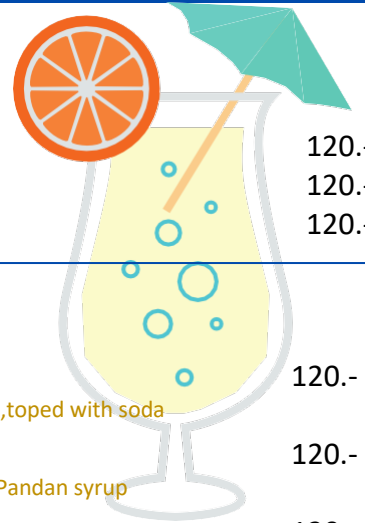
BERRY LOVER	120.-
<i>Strqwberry,Blueberry,Raspberry,Yogurt</i>	
THE HILLTOP SMOOTHIE	120.-
<i>Orange juice,Strawberry,milk</i>	
TROPICAL MANGO	120.-
<i>Mango juice,Orange juice,Strawberry,Banana</i>	

FRUIT JUICE

FRESH COCONUT	100.-
FRESH WATERMELON	100.-
FRESH LIME	100.-
APPLE	100.-
MANGO	100.-
ORANGE	100.-
PINEAPPLE	100.-

ITALIAN SODA

STRAWBERRY SODA	120.-
BLUEBERRY SADA	120.-
LYCHEE SADA	120.-



MOCKTAIL

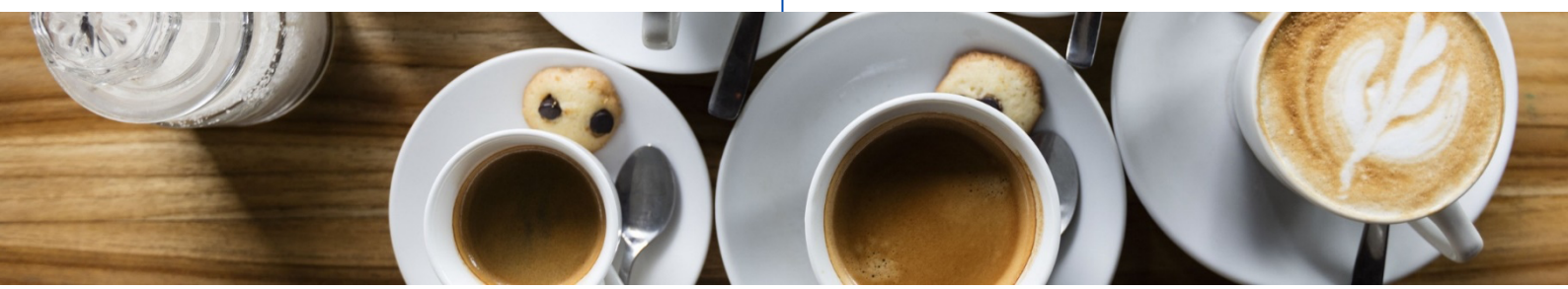
VIRGIN MOJITO	120.-
<i>Mint leave,Fine sugar,Lime juice,toped with soda</i>	
VIRGIN PINNACOLADA	120.-
<i>Pineapple juice,Coconut cream,Pandan syrup</i>	
SHIRLEY TEMPLE	120.-
<i>Shirley juice,Grenadine,Lime juice,Ginger ale</i>	
FRUIT PUNCH	120.-
<i>Pineapple juice, Lime juice, Pandan,Strawberry syrup</i>	

FRUIT SAKE

FRESH COCONUT	120.-
FRESH WATERMELON	120.-
FRESH BANANA	120.-
FRESH LIME	120.-
APPLE	120.-
MANGO	120.-
ORANGE	120.-
PINEAPPLE	120.-
STRAWBERRY	120.-
MIXED FRUIT	120.-

COFFEE & TEA

COFFEE	90.-
ESPRESSO	90.-
DOUBLE ESPRESSO	160.-
CAPUCCINO	100.-/120.-
LATTE	100.-/120.-
THAI MILK TEA (ICE)	100.-
LEMON TEA (ICE)	100.-
LIPTON TEA	90.-





BEER

CHANGE S/L	100.-/180.-
SINGHA S/L	100.-/180.-
HEINEKEN S/L	120.-/200.-

COCKTILS

SIGNATURE COCKTILS

Hilltop sunset	260.-
Rum, Orange Juice, Pineapple juice, Elderflower syrup, Strawberry syrup, Lime j syrup, Lime juice	
Hilltop blue	340.-
Tequila, cacao white, Blue caracao, Lychee syrup, Lime juice	
Hilltop coffee	260.-
Bailey's irish cream, Cointrean, Vanilla ice cream, Coffee	



CLASSIC COCKTAIL(Refreshing)

Mojito	240.-
Rum, lime juice, fine sugar, mint leaves, soda	
Mai tai (Thai Style)	240.-
Light rum, dark rum, orange caracao, orange juice, pineapple juice, lime juice, grenadine	
Margarita	260.-
Tequila, triple sec, lime juice	
Pinna colada	250.-
Rum, Malibu, pineapple juice, coconut milk	
Whiskey sour	260.-
Bourbon, lime juice simple syrup, egg white, angostura bitters	
Long island ice tea	260.-
Vodka, white rum, tequila, gin, triple sec, simple syrup, lime juice, top cola	
Cosmopolitan	250.-
Vodka, triple sec, cranberry juice, lime juice	

Capirinha	250.-
Cachaca, frish lime, fine sugar	
Singapore sling	250.-
Gin, cherry brandy, cointrean, Benedictine, pineapple juice, lime juice, grenadine, angostura bitters	
Bloody mary	250.-
Vodka, tomato juice, Worcestershire sauce, tabasco, black paper, salt, lime juice, salt, lime juice	



Espresso Martini	250.-
Vodka, coffee liqueur, eapresso, simple syrup	
Irish Coffee	250.-
Jameson whisky, kahlua, coffee, brown sugar, top whipping cream	
Black Russian	250.-
Khalua, vodka	
White Russian	250.-
Kahlua, vodka, milk	

Classic Cocktails (Spirits forward)

Dry Martini	280.-
Gin, dry vermouth	
Old fashios	280.-
Bourbon, fine sugar, angostura bittres	
Negroni	280.-
Gin, sweet vermouth, canpari bittres	
Manhattan	280.-
Bourbon, sweet vermouth, angostrura bitters	

Beat Selling Cocktail

Mango Sour	250.-
Vodka, peach schnapps, mango juice, vanilla syrup, lime juice	
Lychee martini	250.-
Vodka, lychee liqueur, lychee syrup, lime juice	
Strawberry daiquiri(frozen)	250.-
Rum, triple sec, strawberry syrup, lime juice	
Midori sour	250.-
Vodka, midori, lime juice, simple syrup	
Sangria	260.-
Red wine, brandy, triple sec, fresh fruits, orange juice, sprite	

Price are subject to 10% service charge
Pictures are for advertising and reference only, actual food may differ





Aperitif

Aperol	200.-
Martini rosso	200.-
Martini Extra dry	200.-
Martini bianco	200.-
Campari	220.-

Bourbon

Jim beam	220.-
Jack daniel's	250.-
Kentucky jack	200.-
Maker mark	350.-



Cognac

Hennessy v.s.	280.-
Reme Martin V.S.O.P.	380.-
Hennessy V.S.O.P.	450.-

Tequila

Jose cuerro gold	200.-
Patron sinver	350.-

Liqueur

Malibu	220.-
Cherry brandy	200.-
Cointreau	240.-
Drambuie	240.-
Grand Marnier	240.-
Midori	220.-
Gailiano vanilla	240.-

Digestif

Sambuca	200.-
Jägermeister	220.-
Baley's	220.-
Kahlua	220.-

Vodka

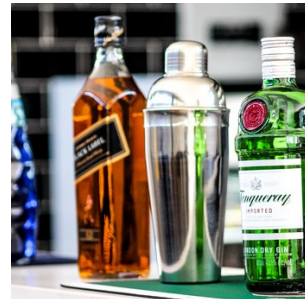
Barton Vodka	180.-
Smirnoff	200.-
Absolut Blue	200.-
Absolut citron	220.-
Absolut raspberry	220.-
Absolut mandarin	220.-
Grey Goose	300.-

Rum

Sangsom	180.-
Bacardi white	200.-
Captain morgan	200.-
Cachaca canario	240.-

Gin

Barton	180.-
Gordon's	220.-
Beefeater	240.-
Bombay sapphire	260.-
Hendrick's	350.-
Tanqueray	240.-



Whiskey

John jameson	220.-
Johnny walker black	250.-
Johnny walker red	200.-
Chivas regalN 12 yrs	250.-
Regency (350ml)	690.-

Single malt whiskey

Macallan 12 yrs	590.-
-----------------	-------

